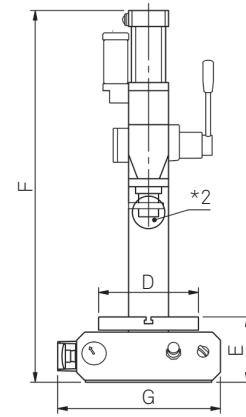
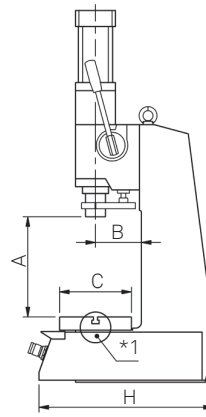


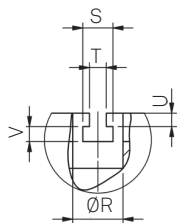
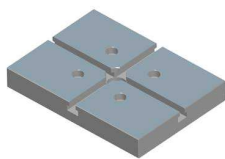
# CARATTERISTICHE DIMENSIONALI - DIMENSIONAL FEATURES

## MOP-B

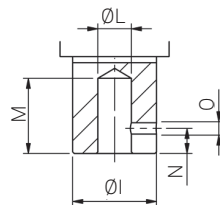


TAGLIA	CORSA	A	A Con cella di carico With load cell	B	C	D	E	F	G	H
07	60	325	255	105	150	200	134	987	333	387,5
	100	260	190					1013,5		
15	60	325	255	105	150	200	134	1036	333	387,5
	100	260	190					1062,5		
30	60	325	245	115	180	250	163	1130,5	408	436,5
	100	275	195					1162,5		
50	60	325	245	125	180	250	203	1212	448	504
	100	327	247					1251		
80	60	325	245	125	180	250	203	1455	448	504
	100	327	247					1494		

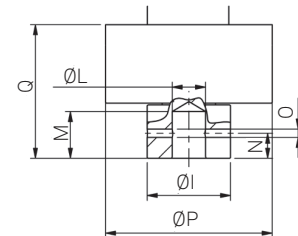
\*1 PIASTRA DI LAVORO  
WORKING PLATE



\*2 STELO STANDARD  
STANDARD ROD END



\*2 STELO CON CELLA DI CARICO  
ROD END WITH LOAD CELL



TAGLIA	R <sup>H8</sup>	S	T	U	V
07/15	30	18	10	7	8
30/50/80	30	18	10	8	9

TAGLIA	I <sup>F7</sup>	L <sup>H8</sup>	M	N	O	M N O Con cella di carico With load cell	P	Q
07/15	35	14	45	15	M8	20 12 2XM6	100	70
30/50	50	20	45	15	M8	28 15 2XM6	100	80
80	50	20	45	15	M8	28 15 2XM6	127	80