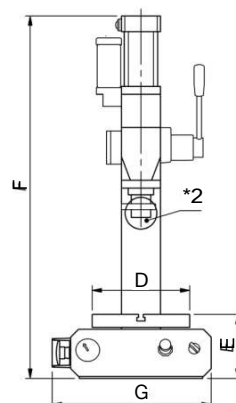
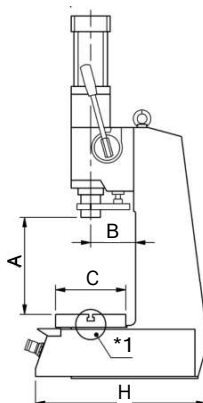


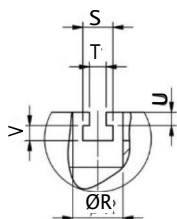
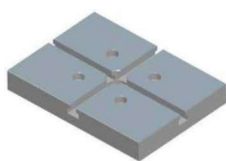
CARATTERISTICHE DIMENSIONALI - DIMENSIONAL FEATURES

MOP-A

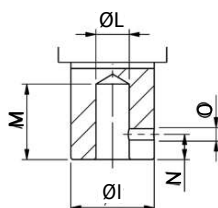


TAGLIA	CORSA	A	A Con cella di carico With load cell	B	C	D	E	F	G	H
07	60	226	156	105	150	200	134	888	333	387,5
	100	161	914,5							
15	60	226	156	105	150	200	134	937	333	387,5
	100	161	963,5							
30	60	250	170	115	180	250	163	1055,5	408	436,5
	100	200	120					1087,8		
50	60	250	170	125	180	250	203	1137	448	504
	100	252	172					1176		
80	60	250	170	125	180	250	203	1380	448	504
	100	252	172					1419		

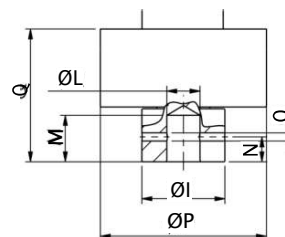
*1 PIASTRA DI LAVORO
WORKING PLATE



*2 STELO STANDARD
STANDARD ROD END



*2 STELO CON CELLA DI CARICO
ROD END WITH LOAD CELL



TAGLIA	R ^{H8}	S	T	U	V
07/15	30	18	10	7	8
30/50/80	30	18	10	8	9

TAGLIA	I ^{F7}	L ^{H8}	M	N	O	M	N	O	P	Q
						Con cella di carico With load cell				
07/15	35	14	45	15	M8	20	12	2XM6	100	70
30/50	50	20	45	15	M8	28	15	2XM6	100	80
80	50	20	45	15	M8	28	15	2XM6	127	80